

2020

# MD-PhD Applications in the time of COVID-19

Communications Committee of the MD-PhD  
Section of the Group of Research, Education,  
and Training (GREAT) AAMC



Tomorrow's Doctors, Tomorrow's Cures®

---

Learn

---

Serve

---

Lead



Association of  
American Medical Colleges

# Content credits



**Jose E. Cavazos, MD PhD**

Assistant Dean & Director, South Texas Medical  
Scientist Training Program

Professor, Neurology, Neuroscience and Physiology

Chair-Elect, AAMC MD/PhD Section

Chair-Elect, National Association of MD/PhD Programs



**Talia H. Swartz, MD PhD**

Associate Director, Icahn School of Medicine at Mount  
Sinai Medical Scientist Training Program

Assistant Professor, Medicine, Infectious Diseases

Communications Committee, AAMC MD/PhD Section

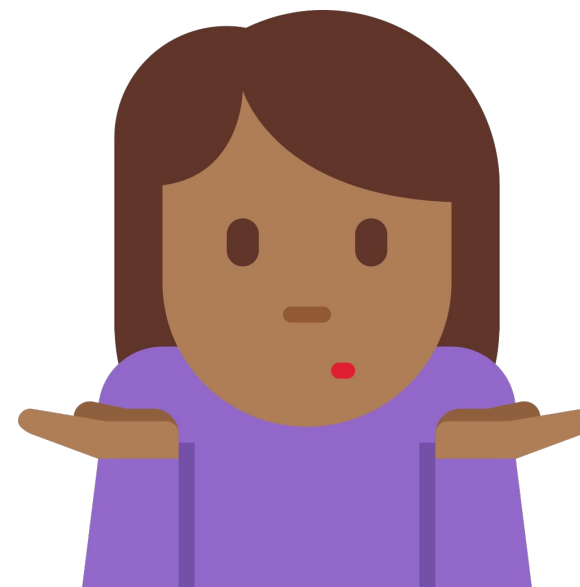




**The COVID-19 pandemic has created monumental challenges in the world around us**

# Applicants in the 2020-2021 MD/PhD admissions cycle

## What does this mean for YOU?



# Elements of the successful MD-PhD application

## HOLISTIC REVIEW

- Applicants show integrity and maturity:
  - Creative, aptitude for big questions in biomedical research, resilience, collaboration
- Productive research experience(s)\*
- MD-PhD Essay – why MD-PhD?
- Letters of recommendation from research mentors
- Academic record, GPA & MCAT
- Experience in caring for others
- Extracurricular activities and life experiences
- Interviews

# \*What constitutes a substantive research experience?

- **Enough research experience to understand what you are getting into:**
  - Multiple summer projects
  - Undergraduate research, Senior research thesis
  - One or more years pursuing research after undergraduate degree (Post-bac)

**Become familiar with testing hypotheses**



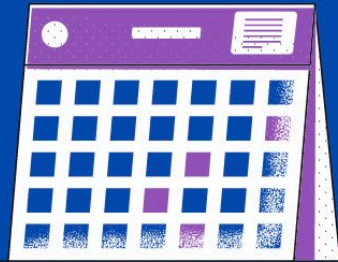
# Elements of the successful MD-PhD application

## HOLISTIC REVIEW

- Applicants show integrity and maturity:
  - Creative, aptitude for big questions in biomedical research, resilience, collaboration
- Productive research experience(s)\*
- MD-PhD Essay – why MD-PhD?
- Letters of recommendation from research mentors
- Academic record, GPA & MCAT
- Experience in caring for others
- Extracurricular activities and life experiences
- Interviews

# The good news

A strong MD/PhD application is not built overnight



A three month hiatus will not negate years of commitment

MD/PhD Programs are working together to be flexible



Programs are developing ways to accommodate applicant needs

MD/PhD application review is holistic



Looking for overall potential for success as a physician scientist



# Elements of the successful MD-PhD application

## HOLISTIC REVIEW

- Applicants show integrity and maturity:
  - Creative, aptitude for big questions in biomedical research, resilience, collaboration
- Substantive research experience(s)\*
- MD-PhD Essay – why MD-PhD?
- Letters of recommendation from research mentors
- Academic record, GPA & MCAT
- Experience in caring for others
- Extracurricular activities and life experiences
- Interviews

# Tips for MD/PhD Applicants on Virtual Interviews



## Find a location with strong wifi

Zoom interviews can use a lot of bandwidth, so identify a location where you'll have consistent wifi connection for long periods of time.



## Test out the equipment

Have a reliable device with software loaded and tested before interview day. Be sure to close all unnecessary applications to optimize performance of the video conference.



## Dress professionally

Even though you may not visit in person, you should appear presentable with attire similar to what you would wear in person. Avoid busy patterns that can be distracting on camera.



## Use strong lighting

It's important for you to be seen so find a location with good natural light and/or strong light source behind your camera. Avoid bright lights behind you as they will create dark shadows.

# Tips for MD/PhD Applicants on Virtual Interviews



*Be passionate about a career as a  
physician scientist*

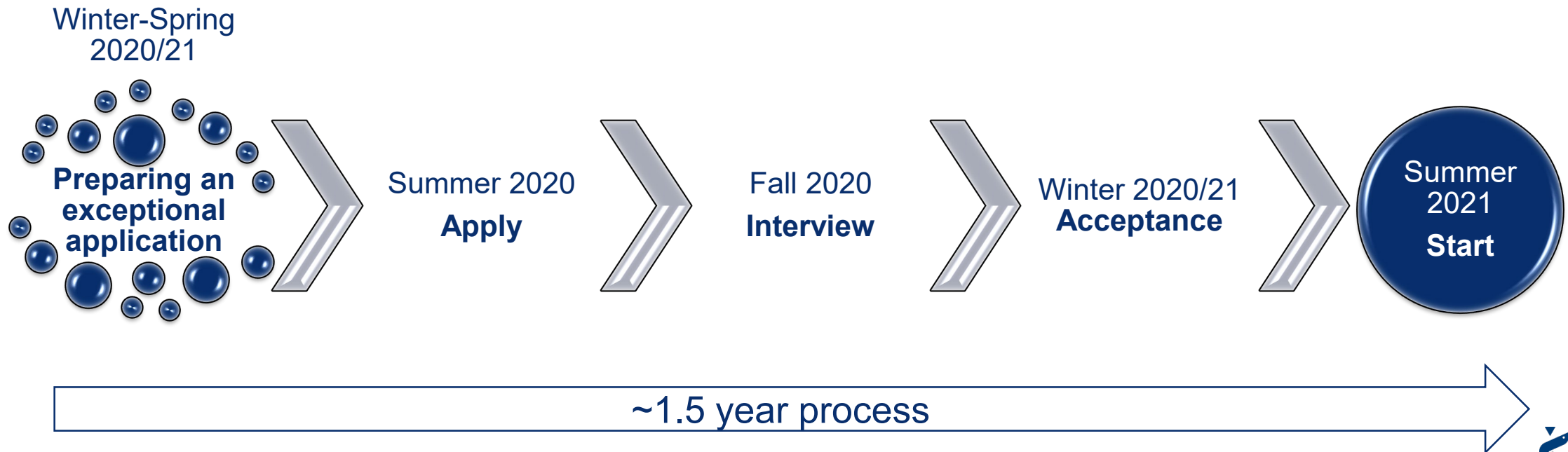
No matter what the circumstances of your interview, your goal is to convey your passion and potential as a physician scientist. This includes your prior experience as a scientist, your capacity for empathy with the human condition, and your ability to effectively communicate these ideas. Good luck!

# Application Timeline

## Candidates Matriculating in the Summer of 2021

### Pre-application (2-3 years)

- Courses
- Research
- Clinical exposures
- Activities and life experiences





# What should you look for in a MD-PhD program?

- Environment (research and academic)
- Students, program activities & professional development, community involvement
- Alumni achievement
- Location
- A sense of belonging or “good fit”



# For more information:

<https://students-residents.aamc.org/applying-medical-school/article/coronavirus-covid-19-and-fee-assistance-program/>

- <https://www.aamc.org/mdphd>
- [www.nih.gov/training](http://www.nih.gov/training)
- **Role models**
  - Directors and Mentors (Summer Program and Post-Bac)
  - Professors, Lab Heads and Department Chairs
  - MD-PhD Students, Graduate Students and Post-Docs
  - Career Advising Offices
  - PhD and MD-PhD Program Directors



@taliaswartz



Tomorrow's Doctors, Tomorrow's Cures®

---

Learn

---

Serve

---

Lead

